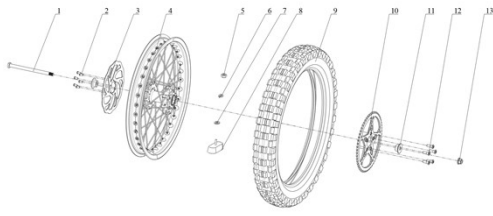


ARES RALLY POR PARTS

1. 后轮总成 Rear wheel assy

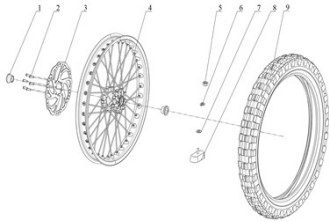
三视图炸开图



NO.	Plant CODE	EN DESCRIPTION	Specification	NOTES
1	319003014001	1- Rear Axle	M12x190mm_10.9 class,Effective thread length 19mm	
2	401016001001	2- Bolt	M6x12mm_10.9级_GBT 2672_涂漆耐橡胶	碟刹盘自带
3	309007010001	3- Brake Disc	12Cr13_2.0mm/Φ210mm diameter with AMLZ logo	
4	307039003001	4- Rear Wheel	WM1.85-18_7116铝合金轮毂_双气门孔_氧化黑色/6082AL花鼓_氧化黑色/10G_65Mn细齿X泰母_不锈钢_附件 (6301轴承*2+25x37x7油封*2)	
5	404001004005	5- Nut	M8(GB/T 6170)	
6	405003011007	6- Washer	Φ8(GB/T 93)	
7	405006047005	7- Washer	Φ8X Φ 16X1(GB/T 97.1)	
8	307010101001	8- Rear wheel anti-slip block	通用	
9	307007281001	9- Tire & Inner Tube (include Tape)	CST CM722_90/100-18_off-road	含内胎、衬带
10	311027003001	10- Driven Sprocket	420/58T_45#	
11	307042001001	11- Rear wheel spacer	Φ12xΦ39.5x17mm_7075AL-T6	
12	403030001001	12- Bolt	M8x25台阶Φ10x8mm (GB/T70.2) 10.9 class	
13	404005009001	13- Nut	M12X1.25_10 class(GB/T 6187.2)	
14		Rear Wheel Assy	Rear Wheel Assy Kit	

2. 前轮总成 Front wheel assy

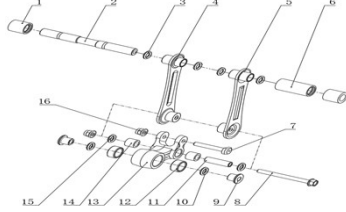
三视图炸开图



NO.	Plant CODE	EN DESCRIPTION	Specification	NOTES
1	307041001001	1- Front wheel spacer	Φ20xΦ35x19mm_7075AL-T6	
2	401016001001	2- Bolt	M6x12mm_10.9级_GBT 2672_涂漆耐橡胶	碟刹盘自带
3	309007010001	3- Brake Disc	12Cr13_2.0mm/Φ210mm diameter with AMLZ logo	
4	307038003001	4- Front Wheel	WM1.6-19_7116铝合金轮毂_双气门孔_氧化黑色/6082AL花鼓_氧化黑色/10G_65Mn细齿X泰母_不锈钢_附件 (61904轴承*2+26x37x7油封*2)	
5	404001004005	5- Nut	M8(GB/T 6170)	
6	405003011007	6- Washer	Φ8(GB/T 93)	
7	405006047005	7- Washer	Φ8X Φ 16X1(GB/T 97.1)	
8	307010001001	8- Front wheel anti-slip block	通用	
9	307007282001	9- Tire & Inner Tube (include Tape)	CST CM721_70/100-19_off-road	含内胎、衬带
10		Front Wheel Assy	Front Wheel Assy Kit	

3. 摇臂、摆架总成 Linkage

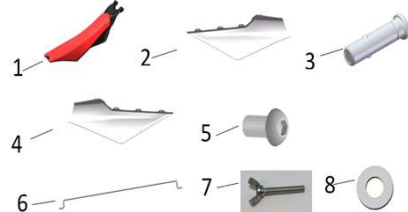
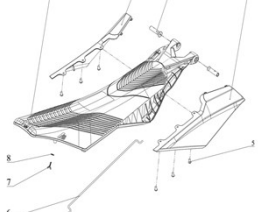
三视图炸开图



NO.	Plant CODE	EN DESCRIPTION	Specification	NOTES
1	305056001001	1- Outer Nylon sleeve	_PA66_Φ16xΦ26x24.5	
2	603027001001	2- Spacer	_20#_Φ8X Φ 16X150mm	
3	319075004001	3- O-seal ring	Φ14x2.6mm GB/T3452.1	
4	305052002002	4- Linkage L	Steel	
5	305057001002	5- Linkage R	Steel	
6	305055001001	6- Middle Nylon sleeve	PA66_Φ16xΦ26x51	
7	401012001001	7- T bolt	M8X1.25X50mm_10.9class_with glue, Effective tread L=15	
8	401010004001	8- Bolt	M8x1.25x85mm_10.9 class_with glue	
9	603029002002	9- spacer	Φ12xΦ20x19.5mm_40Cr	
10	319075002001	10- O seal	Φ19x3.55mm GB/T3452.1	
11	603028001001	11- Middle spacer	40Cr_42-50HRC	
12	409009002001	12- Bearing	HK2012 GB/T 290	
13	306008006001	13- Linkage	6082AL_7X453-005	
14	409009001001	14- Bearing	HK4H12H GB/T 290	
15	319075003001	15- O seal	Φ10x3.55mm GB/T3452.1	
16	404030002001	16- Nut	M8x1.25_10 class	
17		Linkage	Linkage Kit	

4. 座垫总成 Seat

三视图炸开图

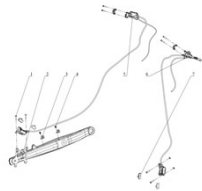


NO.	Plant CODE	EN DESCRIPTION	Specification	NOTES
1		1- Seat Cushion		
2		2- Seat Base		
3		3- Bolt		
4		4- Seat Backrest		
5		5- Bolt		
6		6- Bolt		
7		7- Bolt		
8		8- Washer		

NO.	Plant CODE	EN DESCRIPTION	Specification	NOTES
1	31302002001	1- Seat (Red)	A bottom_plate_black-strengthen PP /Seat cushion self - crusted foam_Orange red YS794-1 70% mattThe elastic bands Φ5x1400 -black	
1		1- Seat (Black)	A bottom_plate_black-strengthen PP /Seat cushion self - crusted foam_Orange red YS794-1 70% mattThe elastic bands Φ5x1400 -black	
2	304114002001	2- Left middle plastic cover	Thickness : 2.5mm size: 368*174*74	
3	60203052003	3- Fix pin	Straight pull_ outer diameter 12mm Ball lock	
4	304115002001	4- Right middle plastic cover	Thickness : 2.5mm size: 368*174*74	
5	403004036001	5- Screw	M6X12_GB/T 70.2	
6	303237001001	6- Seat opening stick	stainless steel_diameter 6 4mm_L=382mm	
7	401015001001	7- Buttery bolt	M6X30_stainless steel	
8	405006063001	8- Washer	6 GB/T97.1	
9		Seat	Seat Kit	

5. 制动总成 Brake Assy

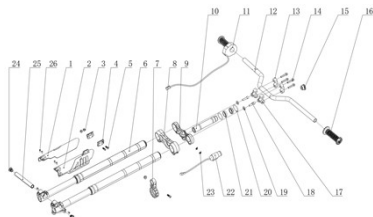
三视图



NO.	Plant CODE	EN DESCRIPTION	Specification	NOTES
1	401017001001	1- Bolt	M6X18.5mm_带垫片_10级_GB/T 70.1. 涂漆耐腐胶	
2	308057001001	2- Rear brake bracket	_6082AL_TX-553-012	Come with brake
3	318001002002	3- Clip	APOLLO_material ABS_37-5	
4	403001009001	4- Screw	M6x10mm_8.8级 (GB/T70.3)	
5	308058006001	5- Rear brake Assy	893_开关线490mm直径7.5mm油管1375mm/左泵体黑色/油杯盖黑色/主泵座黑色/手柄黑色/堵塞红色/891加大烧蚀摩擦片(带碟刹盘与碟刹器安装螺栓)	
6	308059006001	6- Front brake Assy	893_开关线490mm直径7.5mm油管1100mm/右泵体黑色/油杯盖黑色/主泵座黑色/手柄黑色/堵塞红色/891加大烧蚀摩擦片(带碟刹盘与碟刹器安装螺栓)	
7	308060002001	7- Brake pad	891 bigger sintering brake pad	
8		Brake Assy	Brake Assy Kit	

6. 前叉总成 Front Fork

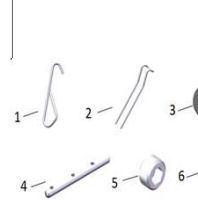
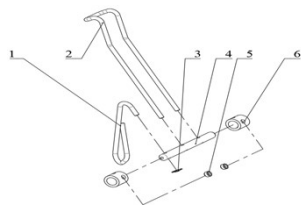
三视图



NO.	Plant CODE	EN DESCRIPTION	Specification	NOTES
1	304120002001	1- Right cover of front fork	thickness : 2.5mm , material:K8003	
2	304119002001	2- Left cover of front fork	thickness : 2.5mm , material:K8003	
3	404030003001	3- Nut	M6 GB/T 6187.1-2000	
4	603001115002	4- Pipe support	304 stainless steel_1.2mm	
5	403004037001	5- Screw	M6X20_GB/T 70.2	
6	305053004001	6- Front fork	KKE-BS35B14_单可调_外管45mm直径行程200mm/前轴20mm(减震主体黑色/氧化黑色/压缩调节钮_黑色/叉管45#)Outer diameter 45mm, travel 200mm, adjustable	
7	318100001001	7- Pipe support	PP-K8003	
8	310022136001	8- Bottom triple clamp	Center distance 151mm_match with Φ45mm front fork_6082AL_with bolt	
9	310021034001	9- Top triple clamp	Center distance 151mm_match with Φ45mm front fork_6082AL_with bolt	
10	608002002005	10- Steering stem	The bearing inner diameter 30_L= 161mm (M24x1.0Internal thread)_7075AL	
11	315037059001	11- Electronic throttle	5V电子单霍尔油门转把, 安装孔径22. 三孔防水连接器, 带右把套	
12	310001149001	12- Handle bar	Φ22x760mm长_6061AL左侧浪花	
13	310133007001	13- Handle bar holder upper	6061AL_match Φ22mm handlebar_无沉孔	
14	401006090001	14- Bolt	M8x1.25x30_10.9 class_with glue_GB/T 16674.1-2006	
15	319078001001	15- Plug	6061AL_Φ32X20_M24X1.0	
16	310057147001	16- Left grip	with AM and boom LOGO_PVC	
17	310134007001	17- Handle bar holder Bottom	6061AL_match Φ22mm handlebar_Φ10.5穿孔	
18	401006070001	18- Bolt	M10x1.5x35_10.9class_GB/T 70.1_头部光滑_with glue	
19	310143002001	19- Spacer	6061AL_Φ20mmXΦ10.5mm_4_Oxidized scrub black	
20	319034008002	20- O-ring	38x5 GB/T3452.1	
21	409011001001	21- Bearing	Tapered roller bearing 48X30X12 GB/T 297	
22	318102001001	22- Main Lock	Lock tongue extended length 14mm	
23	403001010001	23- Screw	M5X16_10.9 class_with glue	
24	319079002001	24- Front axle screw plug	BE11车型_M16x1.5x18mm_内六角对边S=8mm	
25	307027006001	25- Front axle	BE11车型_Φ20x167mm_7075AL	
26	403004039001	26- Screw	M5X10_GB/T 70.2	
27		Front Fork	Front Fork Kit	

7. 电池压紧机构 Battery Pressing Mechanism

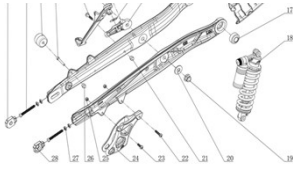
三视图



NO.	Plant CODE	EN DESCRIPTION	Specification	NOTES
1	319073001001	1- Lock torsional spring	65Mn/Φ5	
2	319072001001	2- Battery fixing torsion spring	65Mn/Φ6X391mm	
3	410001002001	3- Spring card (bearing clamp)	65Mn_Φ5x12	
4	609092001001	4- Torsional spring shaft	20#	
5	403028001001	5- Screw	GB/T 77 M8x5	
6	609091001001	6- Torsional spring bushing	20#	
7		Battery Pressing Mechanism	Battery Pressing Mechanism Kit	

8. 后叉总成 Rear Swing Arm Assy

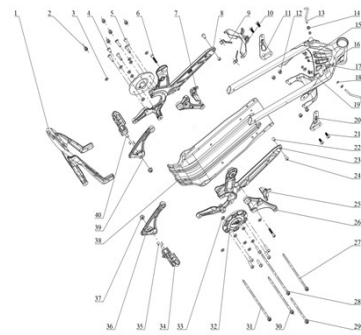




NO.	Plant CODE	EN DESCRIPTION	Specification	NOTES
1	311100001001	1- Left chain tensioner	Alloy- ϕ 12.5mm-L 43mmXW 32.5mmX H 10mm_T slot with graduated	
2	401003017001	2- Bolt	M8X60X1.25_8.8 class _Full thread s=10(GB/T 5789)	
3	303115004001	3- Side stand limit seat	ϕ 6x ϕ 25x20mm_NBR_75-85HB	
4	401006010001	4- Bolt	M6x25mm_8.8级_GB/T 70.1	
5	401009005001	5- Bolt	M6X28_8.8级_GB 5789	
6	401009004001	6- Bolt	M12x1.25x175mm_10.9class_GB/T 5789_with glue, effective thread L=25	
6	303239001001	7- Double tension spring	外径16mm, 线径2.5mm, 圈数n=15, 螺距为6mm	
8	403029004001	8- Bolt	M10X1.25X30mm (带 ϕ 12x16mm台阶) 8.8级_连续耐滑	
9	319001303001	9- Side stand bushing	ϕ 12X ϕ 20X12mm_304 stainless steel	
10	608003019002	10- Tension spring retaining pin	M6x ϕ 8 (s=10) _304 stainless steel	
11	303012262001	11- Side stand	6082AL	
12	405006064001	12- Washer	ϕ 12x ϕ 30x0.5mm_304 stainless steel	
13	303238001001	13- Side stand fixed seat	6082AL	
14	306037005001	14- Swing arm Right	6082AL_TX-553-006	
15	306037004001	15- Swing arm Left	5105A-BE11-212T	
16	304034021001	16- Rear fork cover	thickness : 6mm/ weight : 20g / material: TPU; size : 221*141*55	
17	409010001001	17- Bearing	GEG17C (自润滑) GB/T 9163	
18	305054001001	18- Rear shock	KKE-BA27B07_总长240mm_(减震主体雾化黑色/压缩调节铝_蓝色/复原调节铝_红色)	
19	404005090001	19- Nut	M12X1.25_10级(GB/T 6187.2)	
20	319077020001	20- Washer	M12x32x2	
8	404028003001	21- Cover Nut	M6_总高9_对边10_中性盐雾72h.	
22	403004041001	22- Screw	M6X30_8.8 class_with glue	
23	403004040001	23- Screw	M6X20_8.8 class_with glue	
24	301062002001	24- Chain guide	Nylone PA6_Y5794-1_70% matt	
25	404027001001	25- Nut	M6 GB/T6184	
8	404028003001	26- Cover Nut	M6_总高9_对边10_中性盐雾72h.	
27	404002008001	27- Nut	M8x1.25 M8_S=12mm(非标)	
28	311101001001	28- Right chain tensioner	Alloy- ϕ 12.5mm-L 43mmXW 32.5mmX H 10mm_T slot with graduated	
29		Rear Swing Arm Assy	Rear Swing Arm Assy Kit	

9. 车架总成 Frame

三维爆炸图

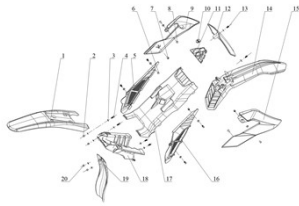


NO.	Plant CODE	EN DESCRIPTION	Specification	NOTES
1	606023001001	1- Sub-frame	_Sub-frame left & right 6082AL/Rear bending beam of subframe_6061AL/Seat mounting plate_6061AL/Plastic mounting plate_6061AL_TX-553-007	
2	404028001001	2- Cover Nut	M8X1.25_ stainless steel GB/T 923-1988	
3	319077001001	3- Washer	ϕ 8X ϕ 16X2(GB/T 97.1)	
4	403029002001	4- Screw	M8x1.25x16mm-F_10.9 class_GB/T 2672_with glue	
5	403029001001	5- Screw	M8X1.25X30mm-F_10.9 class_with glue,effective thread length25	
6	401006004001	6- Bolt	M8x1.25x40mm_10.9 class_GB/T 70.1_with glue,effective thread length25	
7	603001113001	7- Left battery holder	_6082AL_TX-553-008	
8	601001479001	8- Left frame part	_6082AL_TX-553-002	
9	609004001002	9- Cip	_cold-reduced sheet 1.5mm/Q195	
10	319076001001	10- Rubber spacer	_Rubber	
11	601001507005	11- Frame reinforcement-left	2.5mm_304 stainless steel	
12	404029001001	12- Nut	M8x1.25_10 class(GB/T 6184)	
13	601001420004	13- Front side plastic fixing bracket	304不锈钢_6MM线长122	
14	404025001001	14- Nut	M6_GB/T 6177.1	
15	405010002001	15- Washer	ϕ 6x ϕ 16x2	
16	303001457002	16- Frame	BE11车型道路版_Y5794-1.80%清光	
17	404030003001	17- Nut	M6 GB /T 6187.1-2000	
18	319016031001	18- Rubber washer	复合油管改装垫片(ERP编码312004001001)_ ϕ 4.5X ϕ 10mm(1m=0.09公斤)_图号:5104C-BE11-222A	
19	318001003001	19- Rear brake tube clip	塑料_ ϕ 10mm_宽23.5mm_安装孔 ϕ 6.2mm	
20	601001507006	20- Frame reinforcement-right	2.5mm_304 stainless steel	
21	403029003001	21- Screw	M8x1.25x20mm-F_10.9 class_GB/T 2672_with glue	
22	404026001001	22- Cover Nut	M8/ outer diameter ϕ 12_ stainless steel	
23	601001480001	23- Right frame part	_6082AL_TX-553-003	
24	403029005001	24- Screw	M8x1.25x18mm-F_10.9 class_GB/T 2672_with glue	
25	603001114001	25- Right battery holder	_6082AL_TX-553-009	
26	603001112001	26- Shock absorber fix holder	_6082AL_TX-553-004	
27	401010001001	27- Bolt	M8X1.25X205mm-F_10.9 class_with glue,effective thread length15	
28	401010002001	28- Bolt	M8X1.25X230mm-F_10.9 class_with glue,effective thread length15	
29	401010003001	29- Bolt	M8X1.25X135mm-F_10.9 class_with glue,effective thread length15	
30	401010001001	30- Bolt	M8X1.25X205mm-F_10.9 class_with glue,effective thread length15	
31	401010002001	31- Bolt	M8X1.25X230mm-F_10.9 class_with glue,effective thread length15	
32	601001478001	32- Rear swing arm fix holder	_6082AL_TX-553-001	
33	404002008001	33- Nut	M8x1.25 M8_要求S=12mm(非标)	
34	606009010001	34- Foot rest Right	_201 stainless steel3.0mm/Foot seat_45#	
35	407008005001	35- Pin	Cylindrical pin_ ϕ 5x6x12mm_GB/T 119.1-2000	

36	606010006001	36- Footrest bracket right	_6062AL_前1后2脚踏安装孔状态
37	404005008001	37- Nut	M10X1.25_10 class(GB/T 6187.2)
38	609088002005	38- Motor guard	_Alloy plate 4.0mm/6061AL
39	606010005001	39- Footrest bracket left	_6062AL_前1后2脚踏安装孔状态
40	606009011001	40- Foot rest left	_201 stainless steel3.0mm/Foot seat_45#
41		Frame	Frame Kit

10. 塑料总成 Plastic Body

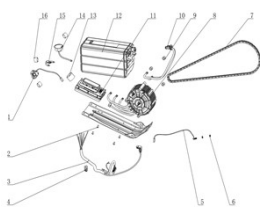
三视图炸开



NO.	Plant CODE	EN DESCRIPTION	Specification	NOTES
1	304009020001	1- Rear fender (White Color)	壁厚:3mm质量:225g_材质:K8003_尺寸:502*178*75_图号:7401A-BE11-312A	
		1- Rear fender (Black Color)	壁厚:3mm质量:225g_材质:K8003_尺寸:502*178*75_图号:7401A-BE11-312A	
2	404028002001	2- Screw	M6_GB/T 923-1988	
3	405006030001	3- Washer	6 GB/T97.1	
4	403004038001	4- Screw	M6X16_GB/T 70.2	
5	304112001001	5- Left trim panel of the controller	壁厚:2.5mm质量:54g_材质:PP-GF20_尺寸:383*97*37_图号:72021-BE11-312A	
6	404028002001	6- Cover Nut	M6_GB/T 923-1988	
7	403005122001	7- Screw	M5*12(GB/T70.1)	
8	404028003001	8- Cover Nut	M6_总高9_对边10_中性盐雾72h.	
9	304002023001	9- Front & left plastic cover (White Color)	壁厚:2.5mm质量:90g_材质:K8003_尺寸:369*216*87_图号:72011-BE11-312A	
		9- Front & left plastic cover (Black Color)	壁厚:2.5mm质量:90g_材质:K8003_尺寸:369*216*87_图号:72011-BE11-312A	
10	318103001002	10- Cover of Switch button fix bracket	6061铝_蒙花银色_重量: 4.52g_尺寸: φ24*4.7	
11	304118001001	11- Switch button fix bracket	车型壁厚:2.5mm质量:14g_材质:PP-GF20_尺寸:142*95*38_图号:7304A-BE11-222A	
12	304013028001	12- Number plate	壁厚:2.5mm?质量:93g_材质:K8003_尺寸:217*213*51_图号:7501A-BE11-312A	
		12- Number plate	壁厚:2.5mm?质量:93g_材质:K8003_尺寸:217*213*51_图号:7501A-BE11-312A	
13	403004036001	13- Screw	M6X12_GB/T 70.2	
14	304150240001	14- Front fender (White Color)	壁厚:2.5mm?质量:206g_材质:K8003_尺寸:508*136*236_图号:7200A-BE11-312A	
		14- Front fender (Black Color)	壁厚:2.5mm?质量:206g_材质:K8003_尺寸:508*136*236_图号:7200A-BE11-312A	
15	301056004001	15- Front & left plastic cover (White Color)	壁厚:2.5mm质量:90g_材质:K8003_尺寸:369*216*87_图号:72012-BE11-312A	
		15- Front & left plastic cover (Black Color)	壁厚:2.5mm质量:90g_材质:K8003_尺寸:369*216*87_图号:72012-BE11-312A	
16	304113001001	16- Right trim panel of the controller	壁厚:2.5mm质量:56g_材质:PP-GF20_尺寸:383*97*37_图号:72022-BE11-312A	
17	304116001001	17- Top cover part A	车型壁厚:2.5mm质量:260g_材质:T30S_尺寸:426*210*83_图号:7302A-BE11-222A	
18	304117001001	18- Storage box	车型壁厚:2.5mm质量:165g_材质:PP-GF20_尺寸:270*184*102_图号:7303A-BE11-222A	
19	304018015001	19- Rear fender	壁厚:2.5mm质量:65g_材质:低密度聚乙烯(LDPE) 尺寸:303*91*45_图号:7202A-BE11-312A	
20	404028002001	20- Cover Nut	M6_GB/T 923-1988	
21		Plastic Body	Plastic Body Kit	

11 电气总成 Electrical System

三视图炸开



NO.	Plant CODE	EN DESCRIPTION	Specification	NOTES
1	315090001001	1- Switch Button (Red)	Silicone three-button (customized logo) four-core wire waterproof plug, lift button: blue, reverse button: dark gray, button surface skin pattern: fine frosted	
		1- Switch Button (Black)	Silicone three-button (customized logo) four-core wire waterproof plug, lift button: blue, reverse button: dark gray, button surface skin pattern: fine frosted	
2	401008001001	2- Bolt	M6X14_stainless steel_GB/T2672 (with glue)	
3	315134001001	3- Harness	Waterproof connector is standard AVSS wire	
4	609099001001	4- Clip	52621245-0190-0_金属浸胶线夹	
5	315203001001	5- Side stand switch	rated voltage: 12V DC, side stand open or not signal output	
6	404032001001	6- Nut	M8_GB/T 6172.1-2016	
7	311011278001	7- Chain	420DX/134 link	
8	315031042001	8- Motor	Rated power: 5KW, rated torque: 21.7N.m, output sprocket: 420-11T, rated voltage: 72V, rated speed: 2200rpm	
9	606093001001	9- Motor spacer	φ6xφ20x14.5mm_Q235	
10	315137001001	10- DC output line	Waterproof connector 6AWG silicone high temperature resistant wire	
11	315021382001	11- Controller	72V 5000W brushless with CAN Bus communication function	
12	315006027001	12- Battery	74V 35AH , with CAN communication, LG21700 5000mah cells, handle :metal nature color, Cloth tape : Red with letters, Plastic shell leather grain : TX-1015,	
13	318027005001	13- Belt	52221360-0032 孔带58	
14	317001702001	14- Display	LED One-line passband fault diagnosis	
15	601019007008	15- Display bracket	BE11-2车型 1.5mm厚度通用快装支架, 65Mn喷光黑	
16	318027004001	16- Belt	52221360-0030 孔带48	
17		Electrical System	Electrical System Kit	

Other parts

NO.	Plant CODE	EN DESCRIPTION	Specification
1	311004004001	1- Front Sprocket 13T	420-13齿-中心孔径17mm(最大直径)
2	311004002002	2- Front Sprocket 11T	420-11齿-中心孔径17mm(最大直径)
3	320051001261	3- Decal kit	22015-2/BE11AM+RFN/法拉利套壳/不含贴膜/花513/红色/0.6329
4	31005012001	4- Brake lever	配893上泵 ADC12 球头直径14mm 长度103mm 活塞推杆轴孔φ9mm 图号:5401C-BE11-122L
5	315014048001	5- CHARGER	厂家型号: SPC-1000W-840100-FP-B; 额定72V 5/10A 带快慢电流调节接口 需CAN通讯 标配AC插头 3.12kg